



House and land package from \$944,669*

Address: Eucalyptus Road, Lang Lang

Inclusions:

- + 2550mm High Ceilings
- + 900mm Westinghouse Appliances
- + Carpets & Flooring
- + 450mm Eaves to Perimeter
- + 2 Automatic Garage Doors / Remotes
- + Colorbond Roof

Montville 380 - Prestige Series

4 2 2

Give us a call or drop in for a chat today.

Office:

Pakenham
17A John St, Pakenham Vic 3810
Nu Value Homes Pty Ltd, CDB-U 54085.

Karen Jurgens

New Home Consultant

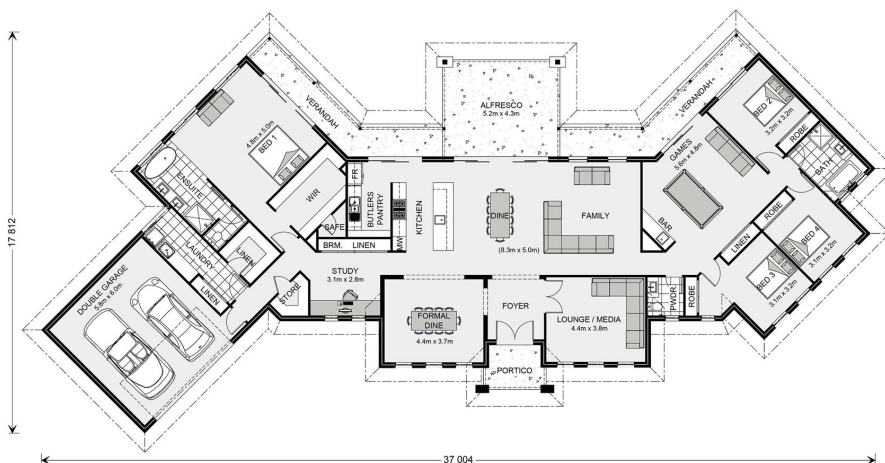
Call: 0447547912

Email: karen.jurgens@gjgardner.com.au

Call: 03 9938 8269

Email: pakenham@gjgardner.com.au

Or visit gjgardner.com.au



*Images and photographs may depict fixtures, finishes and features either not supplied by G.J. Gardner Homes or not included in any price stated. These items include furniture, swimming pools, pool decks, fences, landscaping - including planter boxes, retaining walls, water features, pergolas, screens and decorative landscaping items such as fencing and outdoor kitchens and barbeques. For detailed home pricing, please talk to a new homes consultant.

Welcome **home.**

G.J. Gardner. HOMES